

NOTES

- THIS DRAWING IS TO BE READ IN CONJUNCTION WITH ALL ENGINEERS & ARCHITECTS DRAWINGS FIGURED DIMENSIONS ONLY (NOT SCALING) TO BE USED. WHERE A CONFLICT OF INFORMATION EXISTS OR IF IN ANY DOUBT - 'ASK'.
- CONSULTANTS TO BE INFORMED IMMEDIATELY OF ANY DISCREPANCIES BEFORE WORK PROCEEDS.

Emergency 24h Storage Volume Calculation for the whole development

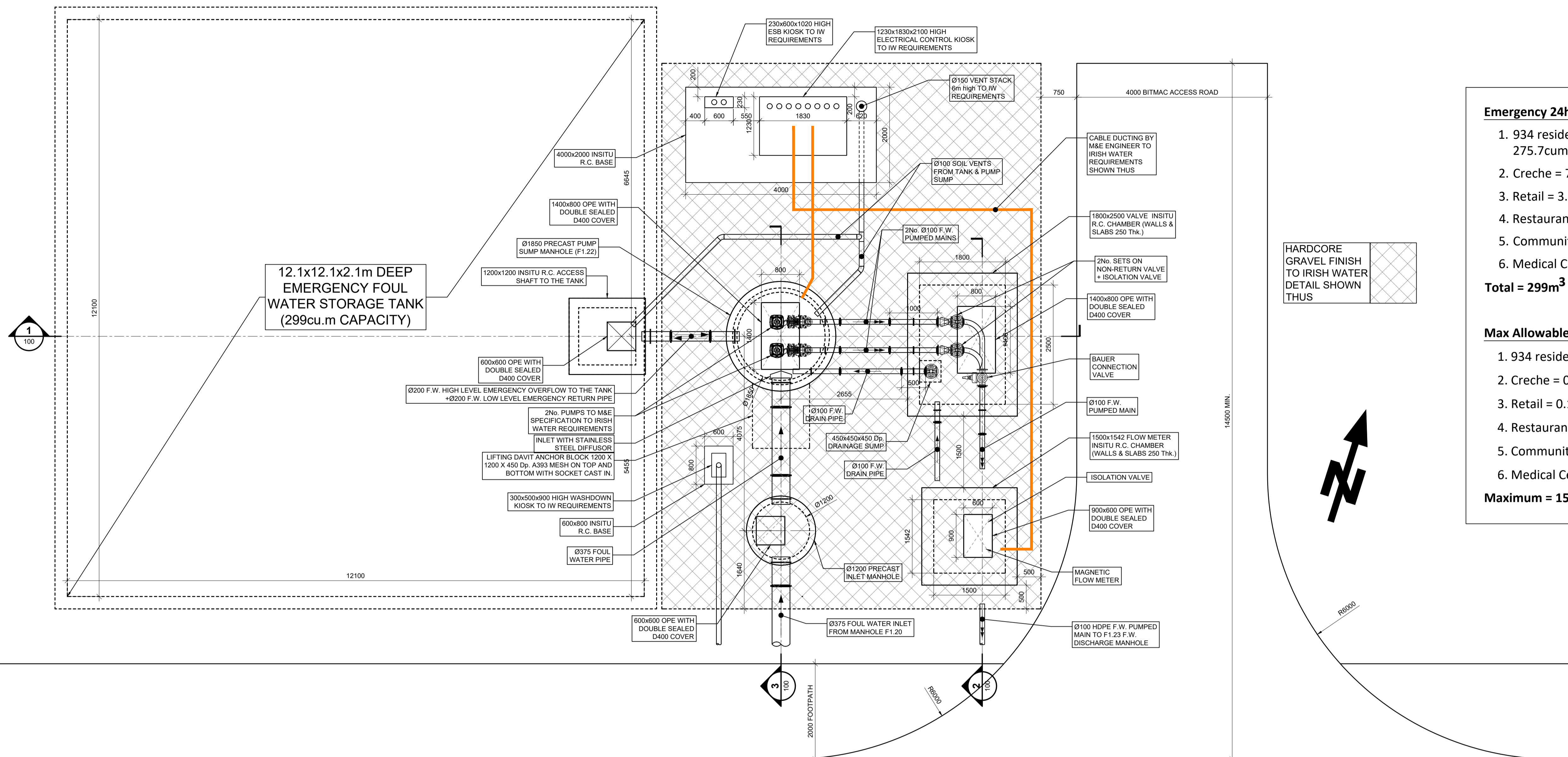
- 934 residential unit storage = $250 \times 0.45 + 83 \times 0.45 \times 0.75 + 601 \times 0.45 \times 0.5 = 275.7 \text{ cum}$
- Creche = 7.9 cum
- Retail = 3.6 cum
- Restaurant = 3.8 cum
- Community Centre = 6.6 cum
- Medical Centre = 1.3 cum

Total = 299m³

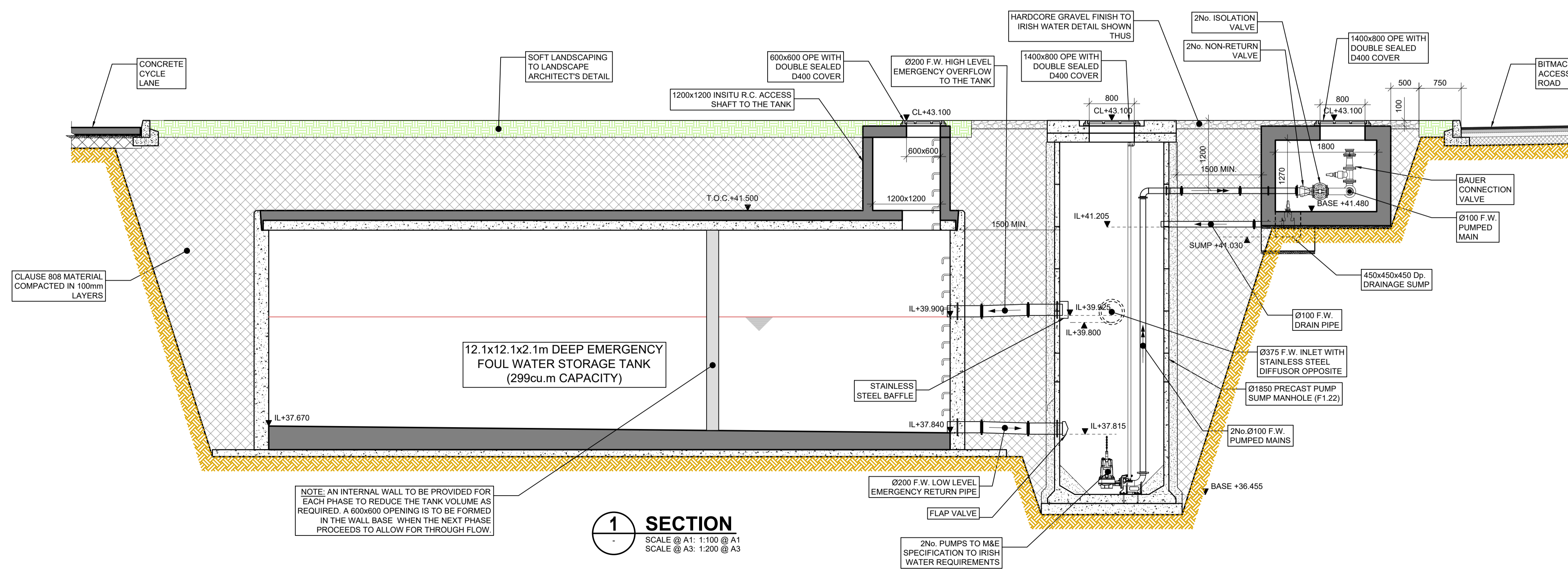
Max Allowable Pump Rate = 3DWF for the whole development.

- 934 residential unit storage = $450 \times 934 \times 3 / (3600 \times 24) = 14.59 \text{ l/s}$
- Creche = 0.28 l/s
- Retail = 0.12 l/s
- Restaurant = 0.13 l/s
- Community Centre = 0.23 l/s
- Medical Centre = 0.04 l/s

Maximum = 15.4 l/s



F.W. LIFTING STATION PLAN DETAILS NOTE: MAX. PUMPED FLOW RATE = 3 DWF = 15.3 l/sec TO IRISH WATER REQUIREMENTS. LIMITATION OF FLOW STEPPED IN LINE WITH PHASING OF THE DEVELOPMENT.
SCALE @ A1: 1:50
SCALE @ A3: 1:100



SECTION 1
SCALE @ A1: 1:100 @ A1
SCALE @ A3: 1:200 @ A3

| ISSUE | DATE | DESCRIPTION | BY |
|-------|----------|---------------------------|----|
| P3 | 05.09.24 | ISSUED FOR PLANNING | WK |
| P2 | 10.07.24 | ISSUED TO LDA FOR COMMENT | WK |
| P1 | 06.06.24 | ISSUED FOR COMMENT | WK |

Project Engineer: Project Director:

BM STAGE

PLANNING

BM Dublin Office: Sandwith House, 52-54 Lower Sandwith Street, Dublin 2, Ireland. Tel: (01) 677 3200 Fax: (01) 677 3154
London Office: 5th Floor, Mill House, 8 Mill Street, London SE1 2BA, United Kingdom Tel: (0044) 20 3750 3530

BARRETT MAHONY Consulting Engineers, Civil / Structural / Project Management E-mail: bmce@bmce.ie Web: www.bmce.ie

The Institution of Structural Engineers **ACEI** **IFICE**

APPLICANT: **DÚN LAOGHAIRE-RATHDOWN COUNTY COUNCIL**

AGENT: **LAND DEVELOPMENT AGENCY**

PROJECT TITLE: **PROPOSED PART 10 RESIDENTIAL DEVELOPMENT, DUNDRUM CENTRAL DEVELOPMENT, DUNDRUM ROAD, DUBLIN 14.** BM PROJECT No: **20.170**

| REFERENCE | SUITABILITY | REVISION |
|-----------|-------------|----------|
| | | |

DRAWING TITLE: **FOUL WATER LIFTING STATION DETAILS SHEET 1 OF 2**

| DWG | DRAWING REFERENCE | STATUS | REVISION |
|-----|---------------------------------|--------|-----------|
| | DCD-BMD-00-00-DR-C-11220 | | P3 |